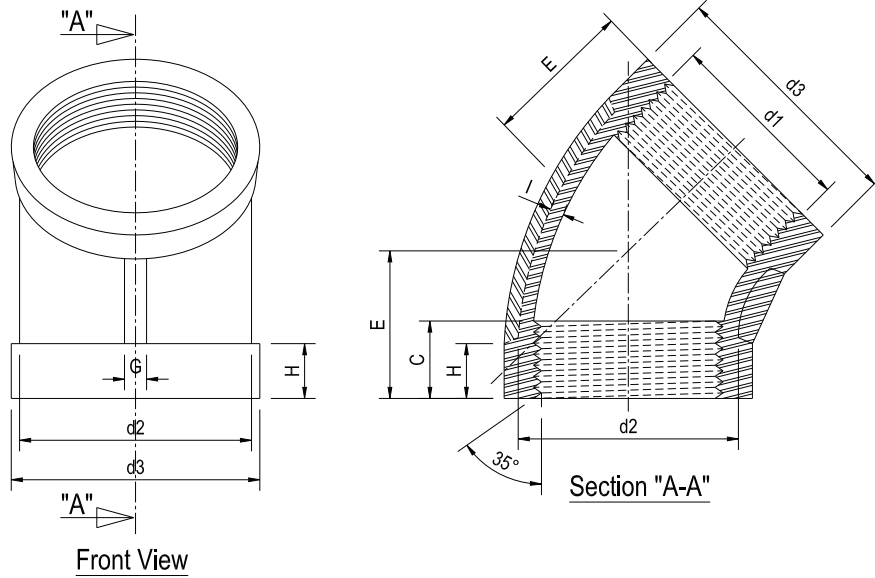


CLASS 150



ELBOW 45° F.F.

No.	Size.	d1		d2		d3		C		E		G		H		I	Weight (Kg/Pc)	
		Inch	(mm)	Inch	(mm)	Inch	(mm)	Inch	(mm)	Inch	(mm)	Inch	(mm)	Inch	(mm)			
1.	1/8"	1/8"	12.70	0.51	12.90	0.55	14.00	0.29	7.40	0.60	15.30	0.08	2.00	0.20	5.00	0.09	2.30	0.02
2.	1/4"	1/4"	15.88	0.63	15.90	0.69	17.40	0.39	9.80	0.73	18.50	0.10	2.50	0.22	5.60	0.09	2.30	0.03
3.	3/8"	3/8"	19.05	0.75	19.00	0.83	21.00	0.39	9.80	0.79	20.00	0.10	2.50	0.25	6.30	0.08	2.10	0.04
4.	1/2"	1/2"	25.40	0.97	24.70	1.06	26.80	0.47	12.00	0.79	20.00	0.10	2.50	0.25	6.30	0.08	2.10	0.06
5.	3/4"	3/4"	31.75	1.19	30.30	1.27	32.30	0.49	12.50	0.94	23.90	0.12	3.00	0.31	7.80	0.08	2.10	0.08
6.	1"	1"	38.10	1.48	37.50	1.57	39.80	0.55	14.00	1.10	27.90	0.13	3.20	0.36	9.20	0.08	2.10	0.13
7.	1 1/4"	1 1/4"	48.26	1.81	46.00	1.93	49.00	0.59	15.00	1.30	33.10	0.18	4.50	0.41	10.50	0.08	2.10	0.21
8.	1 1/2"	1 1/2"	50.80	2.09	53.00	2.20	55.80	0.67	17.00	1.42	36.10	0.18	4.60	0.47	12.00	0.09	2.20	0.30
9.	2"	2"	50.80	2.58	65.50	2.68	68.00	0.75	19.00	1.65	42.00	0.20	5.10	0.49	12.50	0.09	2.20	0.43
10.	2 1/2"	2 1/2"	63.50	3.39	86.00	3.54	90.00	0.91	23.00	1.93	49.10	0.30	7.50	0.49	12.50	0.16	4.00	1.11
11.	3"	3"	76.20	3.78	96.00	3.94	100.00	0.98	25.00	2.13	54.20	0.30	7.50	0.55	14.00	0.16	4.00	1.38
12.	4"	4"	101.60	4.88	124.00	5.00	127.00	1.00	25.50	2.57	65.20	0.30	7.50	0.63	16.00	0.16	4.00	1.90